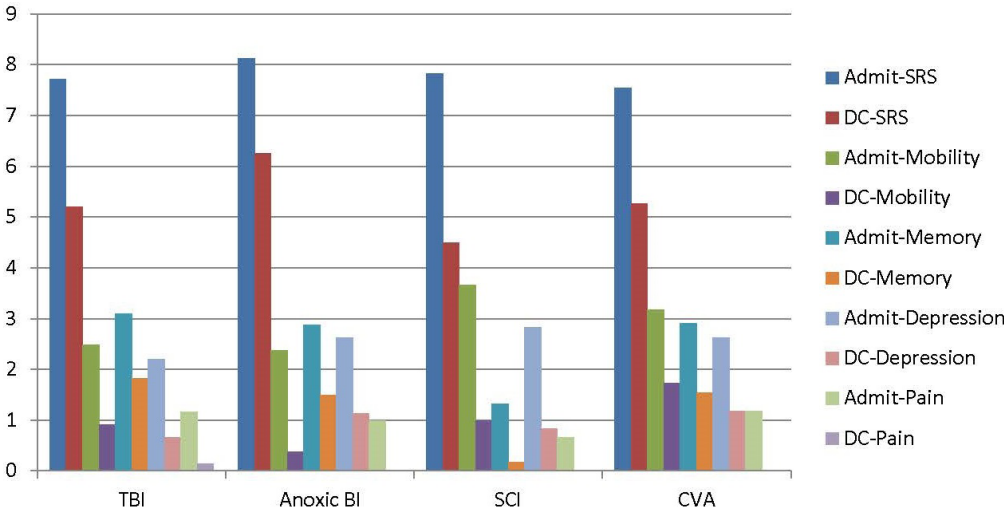




Who QLI Serves:

In 2014, QLI had 147 admissions; 131 to Core Campus, 7 Outpatients, 5 to Assisted Living, and 4 to Long-Term Care.



Diagnoses of those admitted included TBI (47%), CVA (23%), SCI (19%), Anoxic Brain Injury (3%), and Other (8%), which included primary orthopedic issues or similar non-neurological diagnoses.

A few 2014 clinical measures that can be represented in graphs:

Average Supervision Rating Scale score on admission and on discharge for:
 TBI - 7.72 (A), 5.21 (D)
 CVA - 7.55 (A), 5.27 (D)
 SCI - 7.83 (A), 4.50 (D)
 Anoxic BI - 8.13 (A), 6.25 (D)

Average Mobility Rating Scale (Mayo Portland) score on admission and on discharge for:
 TBI - 2.48 (A), 0.91 (D)
 CVA - 3.18 (A), 1.73 (D)
 SCI - 3.67 (A), 1.00 (D)
 Anoxic BI - 2.38 (A), 0.38 (D)

Average Memory Rating Scale (Mayo Portland) score on admission and on discharge for:
 TBI - 3.10 (A), 1.83 (D)
 CVA - 2.91 (A), 1.55 (D)
 SCI - 1.33 (A), 0.17 (D)
 Anoxic BI - 2.88 (A), 1.50 (D)

Average Depression Rating Scale (Mayo Portland) score on admission and on discharge for:
 TBI - 2.21 (A), 0.66 (D)
 CVA - 2.64 (A), 1.18 (D)
 SCI - 2.83 (A), 0.83 (D)
 Anoxic BI - 2.63 (A), 1.13 (D)

Age

at time of admission:

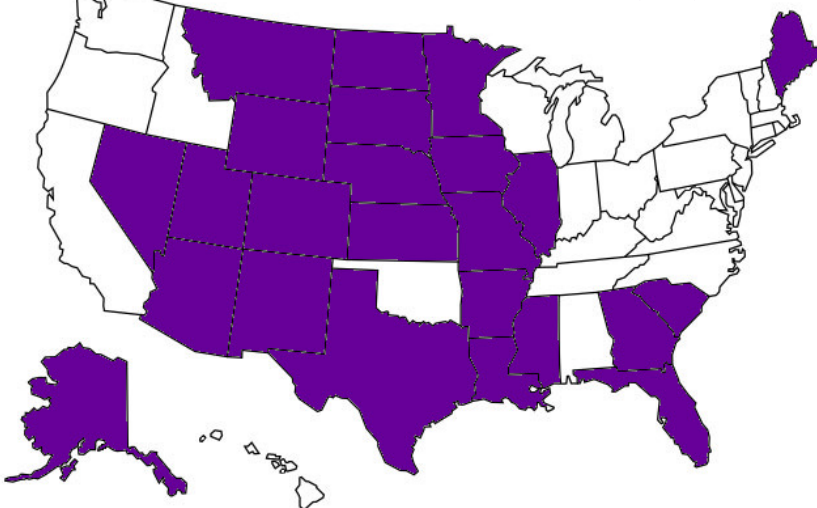
1% below the age of 18.
 44% between 18 and 40.
 54% between 41 and 65,
 and 1% over the age of 65.

Age of 2014 admissions by diagnosis:

TBI - 39 CVA - 47 SCI - 40
 Anoxic BI - 49 Other - 33

The overall average age was 41.

*States Served by QLI in 2014 highlighted in purple



Of those discharged from our rehab campus in 2014, 78.9% were discharged home.

Of those admitted, the gender breakdown was 31% female, 69% male.



UNRIVALED for
25 YEARS